



PRODUCT CATALOGUE

**Construction machinery
- Wheel Loader**



D O O X I N

QINGDAO PENGCHENG GLORY MACHINERY CO.,LTD

Whatsapp : +86-18153282521



About DOOXIN



PENGCHENG group, located in Weihai city, specializes in the design, research and manufacture excavators, loaders, tractors and other construction and agricultural machinery.

PENGCHENG GLORY machinery, subordinated to PENGCHENG group, focuses on DOOXIN product promotion and channel construction for the international market.

With more than 20 years of construction and agricultural machinery industry experience, DOOXIN has been exported to South America, Southeast Asia, Middle East, Europe, Africa and many other countries and regions.

With the advanced CNC processing center, multi-functional laser cutting equipments, CNC bending machines, robot welding equipments and other intelligent production equipments, DOOXIN has independently researched and manufactured more than 100 models of machineries. DOOXIN could supply lots of construction and agricultural implements to achieve integrated solutions, which could meet many conditions and improve the work efficiency.

In order to provide customers with immersive experience services, DOOXIN has branches in Singapore and Philippines to ensure timely and effective supports for our customers.

DOOXIN is committed to building the long-term and stable cooperation with customers and achieving the common development.





About DOOXIN



20+ years industry experience

GLORY has the own factories with professional industry experience to ensure the better performance.

Rapid delivery and service

Branches in Philippines for rapid supply and service.

Timely after-sales service

GLORY provides timely online lifetime free support and branches service offline.

Integrated solutions

Agricultural machinery from farming, seeding, management, harvest to processing.
Construction machinery from excavation, demolition, construction to mining.



High reliability



- DOOXIN patent detachable sealing ring
- Cold-pressed steel pipe joint
- Electrical wiring harness uses AVSS thin skin wire



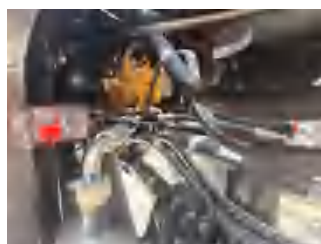
High load bearing

- L series fork structure front and rear frame
- Optimized design of H type bucket



High safety level

- Interior of cabin uses flame retardant materials, EU standard glass
- Optional ROPS/FOPS cabin



Pump Valve Gearbox

- Lonking gearbox
- Develon valves and pumps



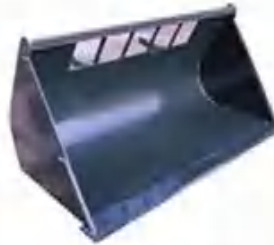
Various of attachments for option, such as extra-large coal bucket, log fork, grain bucket and grass fork etc.



grain bucket



screening bucket



snow bucket



4 in 1 bucket



2 in 1 bucket



grass fork



wood fork



grass fork



soft clamp



pallet fork



fork



snow blower



NO.1 sweeper



NO.2 sweeper



snow blade



v snow blade



Wheel loader
DX320L-2

Rate power/speed
92KW/2200

Rated load capacity
3T

Bucket capacity
2.2m³



DX320L-2 technical specifications

| Main Parameters | | Engine | |
|--------------------------------|-------------------|-------------------|--------------------------|
| Model | DX320L-2 | Engine model | Weichai Deutz WP6G125E22 |
| Overall dimension (L x W x H) | 7165*2496*3350mm | Power/Speed | 92KW/2200 |
| Bucket capacity | 2.2m ³ | Optional engine | Cummins |
| Rated load capacity | 3000KG | Emission standard | National II |
| Overall weight | 10600KG | Transmission | |
| Min ground clearance | 350mm | Axle | Dooxin/Yunyu |
| Max dumping height | 3000mm | Gear | Front 4 rear 2 |
| Corresponding dumping distance | 1245mm | Braking System | |
| Min turning radius | 5710mm | Service brake | Air hydraulic disc brake |
| Wheel track | 1850mm | Parking brake | Hand operated |
| Wheel base | 2830mm | Tyre | |
| Grade ability | 30° | Tire size | 17.5-25PR |

Wheel loader



Wheel loader
DX530L-6

Rate power/speed
162KW/2000

Rated load capacity
5T

Bucket capacity
3m³

DX530L-6 technical specifications

| Main Parameters | | Engine | |
|--------------------------------|------------------|-------------------|--------------------------|
| Model | DX530L-6 | Engine model | Weichai WD10G220E23 |
| Overall dimension (L x W x H) | 8020*2992*3520mm | Power/Speed | 162KW/2000 |
| Bucket capacity | 3.0m³ | Optional engine | Cummins |
| Rated load capacity | 5000KG | Emission standard | National II |
| Overall weight | 17000KG | Transmission | |
| Min ground clearance | 440mm | Axle | Dooxin/Yunyu |
| Max dumping height | 3100mm | Gear | Front 2 rear 1 |
| Corresponding dumping distance | 1316mm | Braking System | |
| Min turning radius | 6710mm | Service brake | Air hydraulic disc brake |
| Wheel track | 2150mm | Parking brake | Hand operated |
| Wheel base | 3200mm | Tyre | |
| Grade ability | 30° | Tire size | 23.5-25-16PR |

Wheel loader



Wheel loader
DX606-9C

Power
175KW/2200

Rated load capacity
6T

Bucket capacity
5m³



DX606-9C technical specifications

| Main Parameters | | Engine | |
|--------------------------------|------------------|-------------------|--------------------------|
| Model | DX606-9C | Engine model | Weichai WD10G240E21 |
| Overall dimension (L x W x H) | 8820*3128*3465mm | Power/Speed | 175KW/2200 |
| Bucket capacity | 5m ³ | Optional engine | Cummins |
| Rated load capacity | 6000KG | Emission standard | National II |
| Overall weight | 20400KG | Transmission | |
| Min ground clearance | 460mm | Axle | Dooxin/Yunyu |
| Max dumping height | 3330mm | Gear | Front 3 rear 4 |
| Corresponding dumping distance | 1330mm | Braking System | |
| Min turning radius | 7470mm | Service brake | Air hydraulic disc brake |
| Wheel track | 2250mm | Parking brake | Hand operated |
| Wheel base | 3250mm | Tyre | |
| Grade ability | 30° | Tire size | 23.5-25-20PR |



QINGDAO PENGCHENG GLORY MACHINERY CO.,LTD

Address:Huangdao District, Qingdao City, Shandong Province

Whatsapp:+86-18153282521